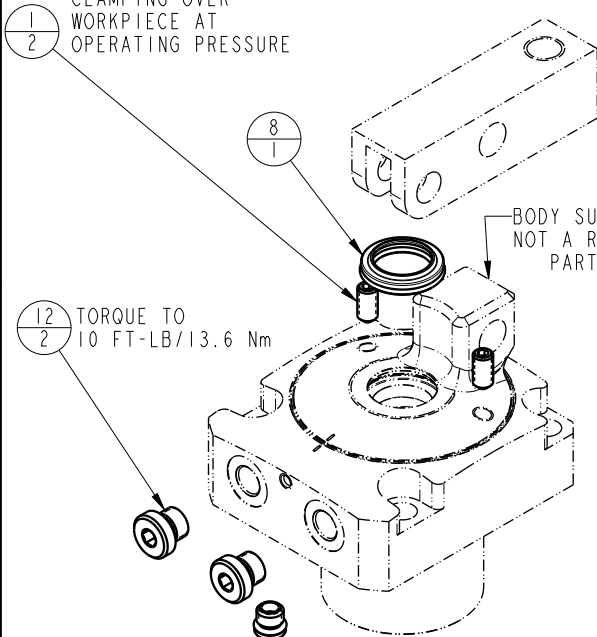


NO	QTY	PART NO	DESCRIPTION	STD SEAL KIT
1	2	21500319	SCREW, SET, CUP PT, M6 X 1 X 12	
2	2	23050036	RING, RTNG, EXT, 0.394	X
3	4	23050037	RING, RTNG, EXT, 0.438	X
4	1	29740200	SENSOR, ULTRASONIC, MI2, 1m	
5	2	39051088	O-RING, (8mm X 3)	X
6	1	39051151	O-RING, (28mm X 2)	X
7	1	39052061	SEAL, ROD, RSD, 18, 85A, AU	X
8	1	39053042	SEAL, WIPER, SNAP IN, WED, 18, 94A, AU	X
9	1	39056033	SEAL, CAP, PISTON, 22.5, 94A, AU	X
10	1	43000040	O-RING, DIN3869, M18	
11	2	43061122	PLUG, SOCH, METRIC, M8	
12	2	43068004	PLUG, SOCH, G1/8	
13	2	81600148	LINK, LC, 7MPa, 50B	
14	2	81600153	PIN, LINK, LC, 7MPa, 50B	
15	1	81600158	PIN, PLUNGER, LC, 7MPa, 50B	
16	1	81600253	PLUNGER, LC, TL360, DA, 2400/10.4kN	
17	1	81600331	CAP, LC, TL360, 2400/10.4kN, US	
N/A	N/A	60160503	KIT, SEAL, ASSY, LC, TL360, DA, 10.4kN	NOTED

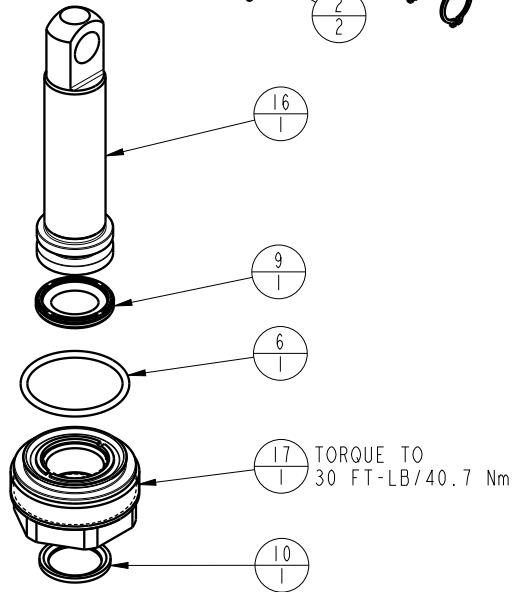
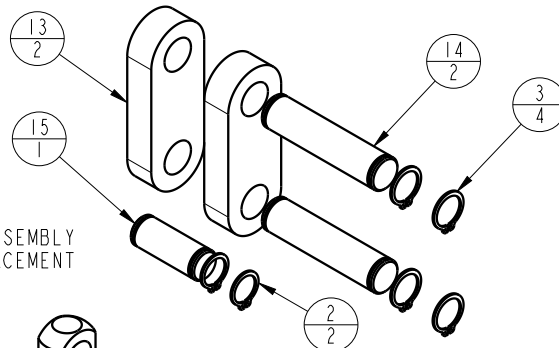
TORQUE TO
36 IN-LB/4.0 Nm
TORQUE WHILE
CLAMPING OVER
WORKPIECE AT
OPERATING PRESSURE



TORQUE TO
10 FT-LB/13.6 Nm

TORQUE TO
2 FT-LB/2.7 Nm

TORQUE INTO RETAINER
AT 45 FT-LB/61 Nm
BEFORE TORQUING
RETAINER INTO BODY



PARTS LIST



VEKTEK, INC.
1334 E. SIXTH AVE. P.O. BOX 625
EMPORIA, KS. 66801 U.S.A.

ASSEMBLIES AFFECTED
41622200US

PARTS LIST, ASSY, LC, TL360, DA, 10.4kN, US

SIZE
A MPL1637

REV
A

SHEET 1 OF 1

FORM FEG035_PL_ASIZE, REV. B

A	5660	RELEASE	ALS	3/24/25
REV	IN ACCORDANCE WITH ECN	EFFECTIVE DATE	REVISED BY	DATE
DRW BY:	ALS	DRAWING STATUS: Released		
DATE:	3/20/25	PRODUCTION APPROVED FOR RELEASED STATUS ONLY		